





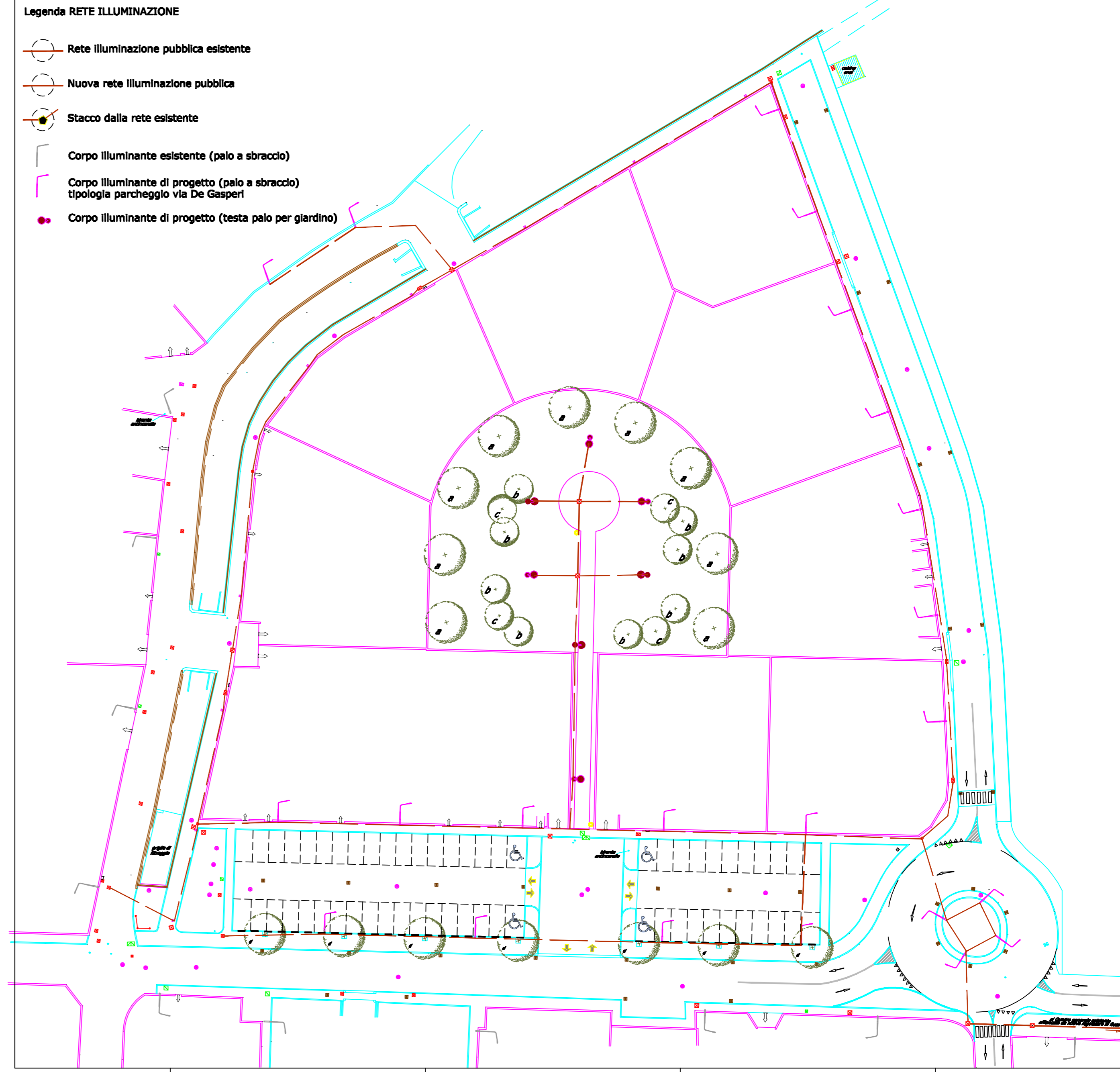






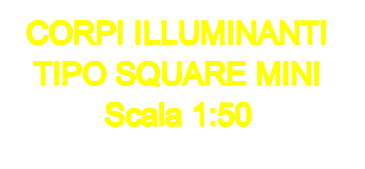
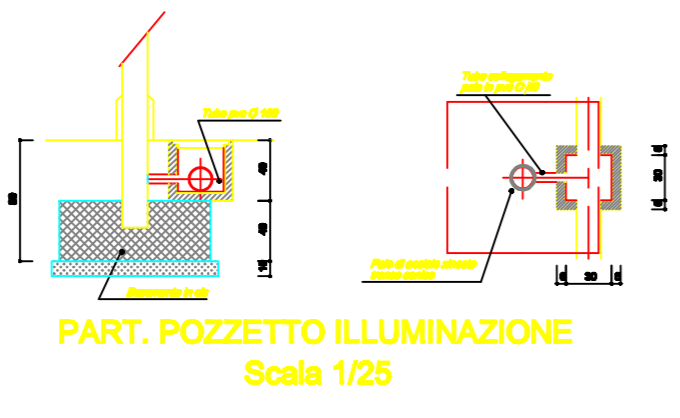
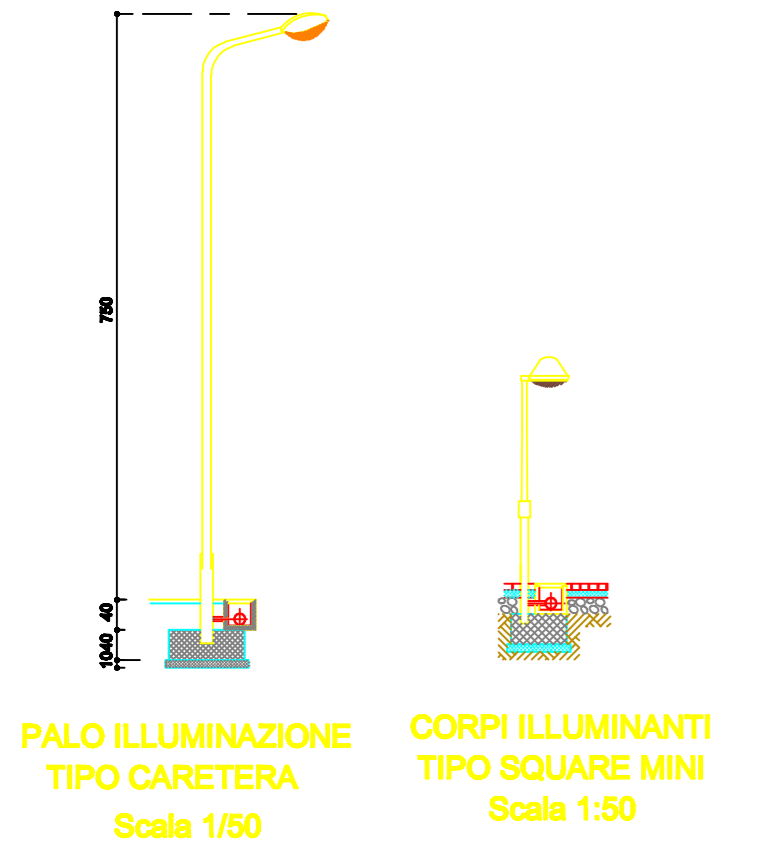
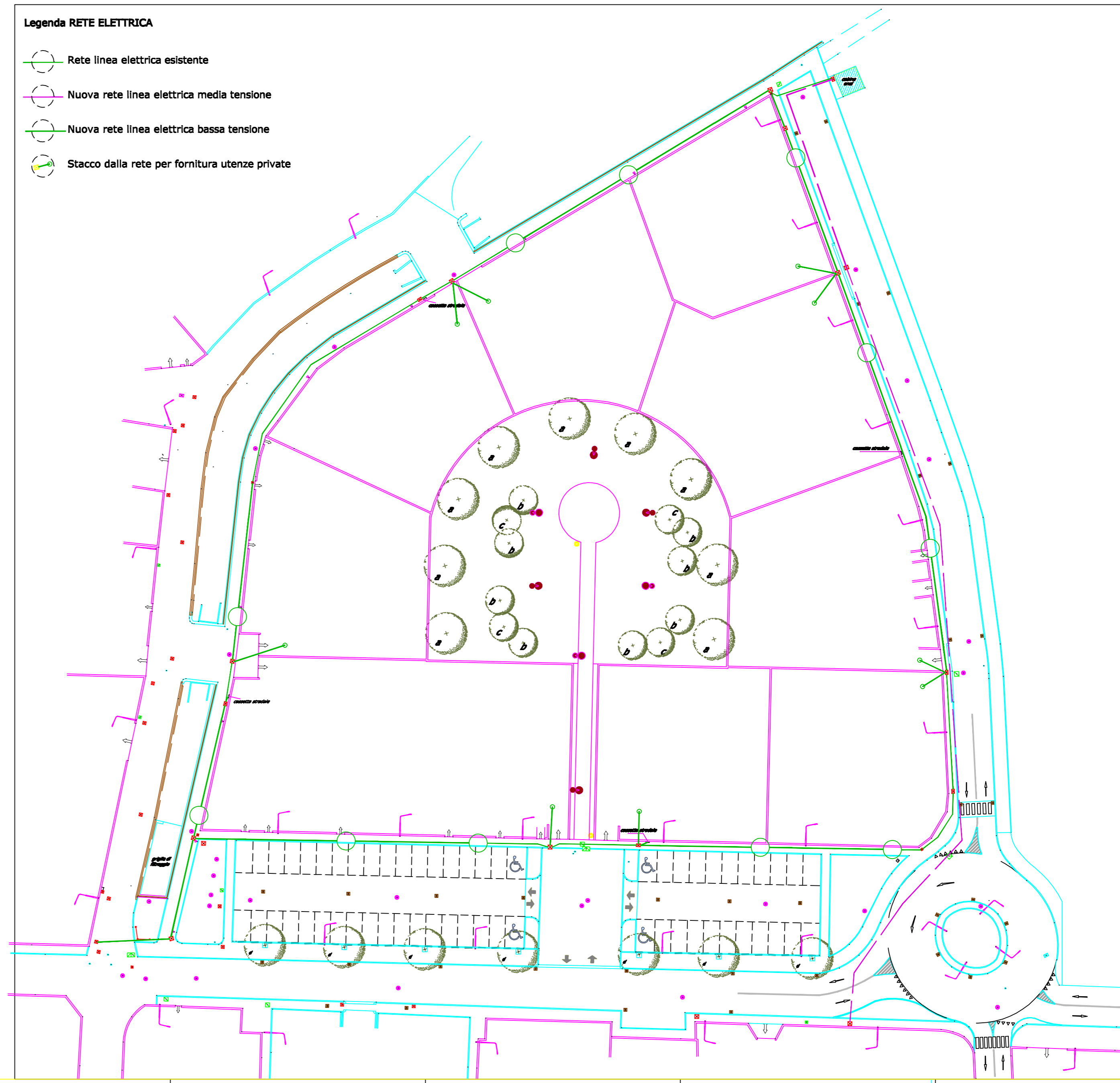
Legenda RETE ILLUMINAZIONE

-  Rete illuminazione pubblica esistente
-  Nuova rete illuminazione pubblica
-  Stacco dalla rete esistente
-  Corpo illuminante esistente (palo a sbraccio)
-  Corpo illuminante di progetto (palo a sbraccio) tipologia parcheggio via De Gasperi
-  Corpo illuminante di progetto (testa palo per giardino)

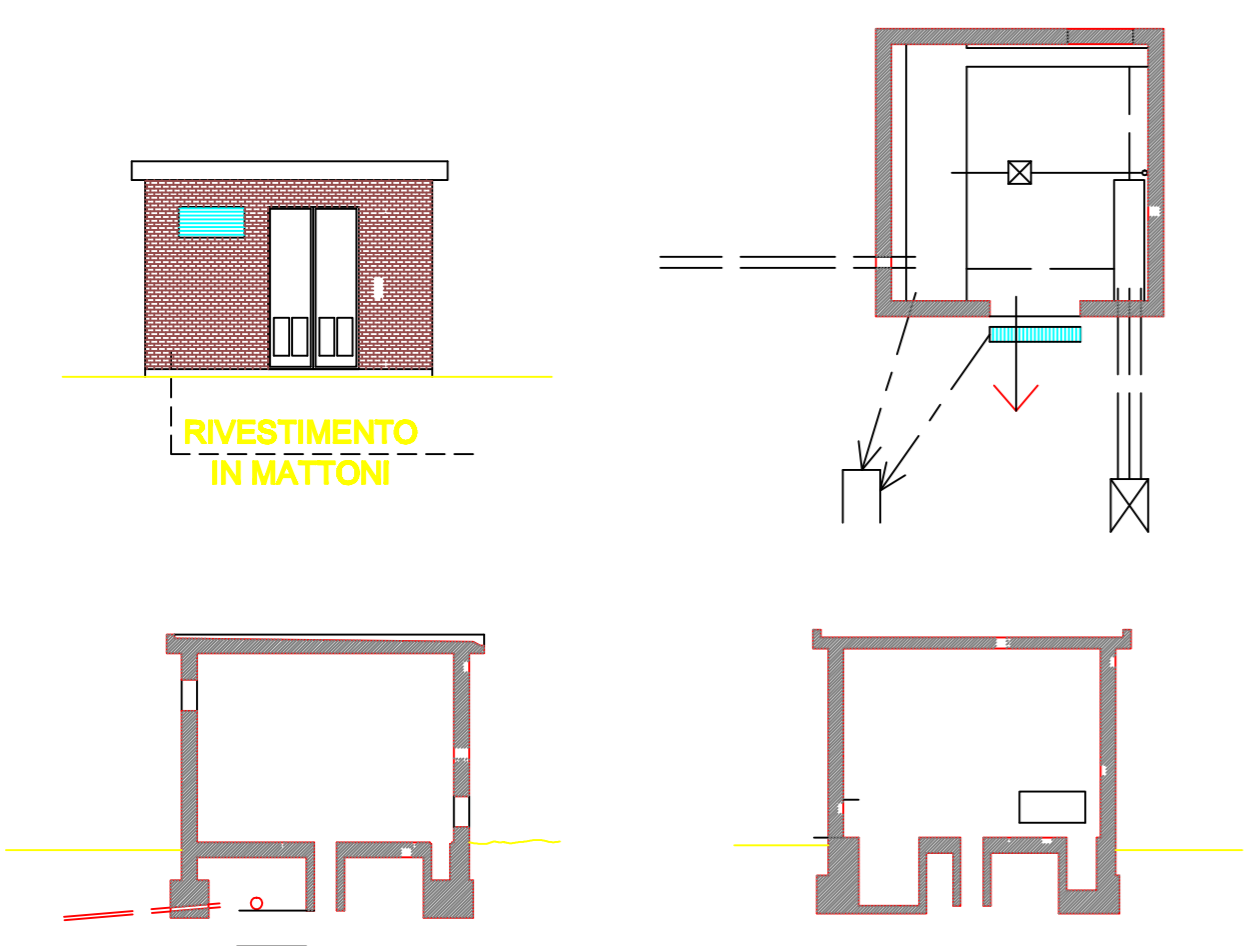


Legenda RETE ELETTRICA

-  Rete linea elettrica esistente
-  Nuova rete linea elettrica media tensione
-  Nuova rete linea elettrica bassa tensione
-  Stacco dalla rete per fornitura utenze private



PARTICOLARI CABINA ELETTRICA



STUDIO TECNICO
Geom. Natale Pedruzzi

24040 MADONE (BG), Piazza dei Vignali n. 10
Tel. 035/991362 - Fax: 035/4997976 - e-mail: info@pedruzzi.it
Cod. Fisc.: PDR NTL 50P28 A962R - P.IVA: 00476810163

Committenti

LOTTIZZANTI DEL PIANO DI LOTTIZZAZIONE

Comune di CAPRIATE SAN GERVASIO
- Provincia di Bergamo -

PIANO DI LOTTIZZAZIONE N. 16 DI VIA GRIGNANO

"OPERE DI URBANIZZAZIONE - VARIANTE N.2"

AS BUILT - AGGIORNAMENTO FINALE

Oggetto elaborato

PLANIMETRIA RETE ELETTRICA
PLANIMETRIA RETE ILLUMINAZIONE PUBBLICA

Il Committente:

Il progettista:

Tavola:
04
Scala disegni:
1/500